

## **OHA SHA: May In-Person Meeting Overview**

**Eugene, Oregon**

**May 28-29, 2025**

**Attendees:** Mica Contreras, Annie Valtierra-Sanchez, Lourdes Reyna Alcala, Whitney Watson, Jolene Cawlfeld, Sadie Wade, Dean Sidelinger, Hannah Rarick, Emily Mosites, Elisabeth Maxwell, TJ Foltz, Cheryl Carter, Julia Brown. OHA Staff: Jameela Norton, Sara Beaudrault, Victoria Demchak, Cintia Vimieiro, Dulce Sanabria, Veronica Herrera. MG Facilitators: Kristin Gimbel, Kirsten Gunst

### **Meeting goals and objectives:**

- Steering Committee members deepen relationships and trust with each other and the OHA team.
- Each steering committee member understands the remainder of the process, what to expect and their specific role at each key milestone.
- Committee members are briefed on community input on priorities.
- Steering Committee has the space to discuss community input and select priorities for the SHIP

### **Public Health Division scope and grounding**

- Updates shared about current state of affairs in Public Health. Oregon public health's system is largely funded by federal grants. The primary scope of the SHIP is within the domain of OHA's Public Health Division and public health system. Public Health asks for help to identify priorities within the realm where Public Health leads the work.
- Things to know about the remaining time in this work:
  - No June meeting.
  - July will have a guest presenter.
  - August's meeting will focus on OHA staff sharing information about Strategies and hearing from Steering Committee members.
  - September -OHA staff will present finalized SHIP.

### **Themes from community input on priorities:**

The Steering Committee had the opportunity to hear summaries on five domains of input and engage in dialogue with OHA staff. The topic areas included:

- Themes and information from 11 community-based-organizations funded to collect input about priorities- hosted by Cintia Vimieiro
- OHA staff survey results- hosted by Victoria Demchak

- Themes from survey responses from local public health and coordinated care organization (CCO) staff, community members, and CBO staff -hosted by Sara Beaudrault and Veronica Herrera
- Themes from community engagement spaces- hosted by Dulce Sanabria
- Themes from rural and Tribal engagement- hosted by Jameela Norton

Mica Contreras, Annie Valtierra-Sanchez, and Lourdes Reyna Alcala, Steering Committee members who recently worked on Community Health Assessments (CHAs) and Community Health Improvement Plans (CHIPs), also shared the priorities that emerged in their communities and provided some details on their process for developing their CHIP.

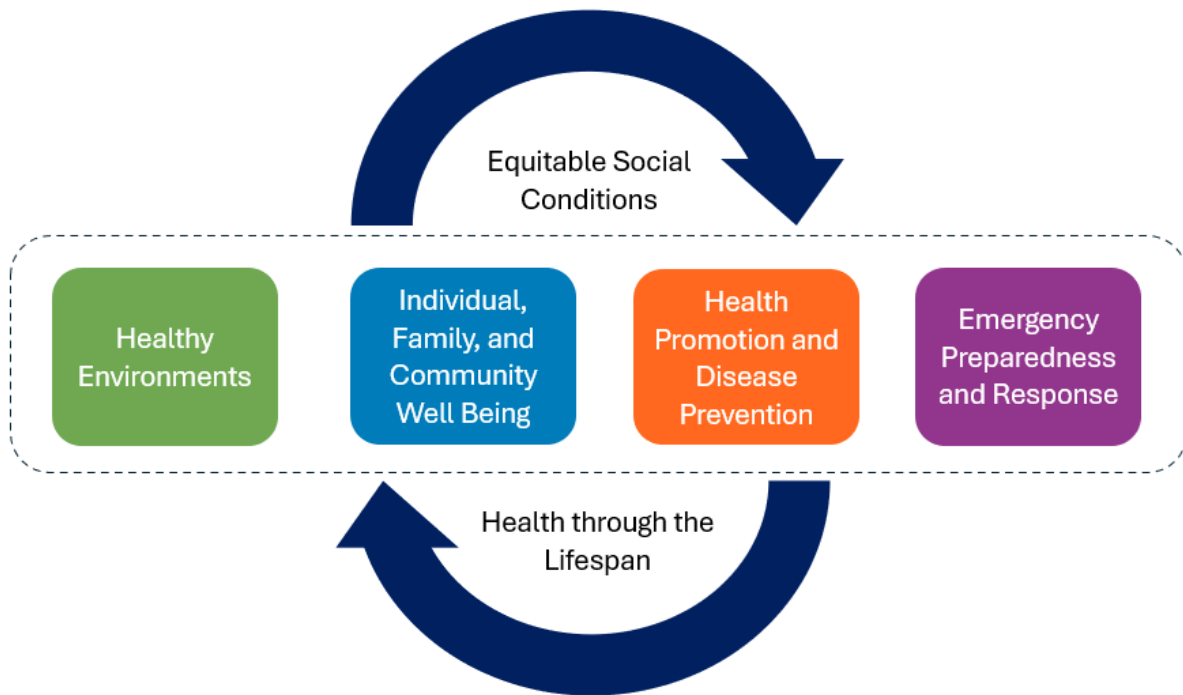
### **SHIP Priorities discussion and selection:**

After 15 minutes of individual reflection time, committee members broke into small groups (3-4 people) to discuss and recommend up to five priorities. The groups then pitched their recommendations to the full Steering Committee. In addition to presenting priorities, members also considered framing and the way that the priorities would be communicated, such as asset-based language and plain language. Some of the groups approached this challenge by ranking the priorities in number order, others proposed visual frameworks and other ways of communicating or presenting the priorities. Committee members then voted individually on priorities using dot stickers.

Following the session, staff from OHA and MetGroup met to identify areas of resonance in terms of priorities and framing. Based on the committee's votes, insights and suggestions—OHA staff and the Metropolitan Group facilitators developed two options to bring back to the group that reflected the Steering Committee pitches and the priorities that received the highest number of individual votes.

On Thursday MG facilitators presented the proposals to the steering committee. Through discussion and finessing, the steering committee voted in favor of the following framework:

## ALL AGES | ALL PLACES | ALL PEOPLES



### Rationale:

- Centers equity in everything we do
- “Equitable social conditions” and “Health through the lifespan” are called out as the container of the plan and show the goal and developmental processes of the work.
- Positive framing and looks upstream
- This is broad and reflects all communities we heard from, but is also simple and actionable

### Future Meeting + Next Steps

The Steering Committee will resume in July with subject matter experts invited to present on key issues that are intersectional to public health but led by other departments/agencies such as behavioral health, transportation and housing to the steering committee.

**SHIP Strategies Discussion:**

The SHIP strategies are being developed by OHA staff and will be matched to the priorities. The SHA/SHIP Redevelopment steering committee helped create criteria for strategy inclusion in the SHIP ([see slide 93 in the May Meeting Materials packet](#)).

**Outreach and Engagement:** Outreach and engagement will look different in our strategy development efforts due to the nature of this work. We are sourcing strategies largely from Public Health Division teams in order to align with planned efforts. At this time, we cannot commit to making changes or composing alternative strategies.

- For funded partners: OHA staff are consulting with our funded partners about some engagement and outreach options. Option 1 will be that we give the funded partner a survey that will outline the priorities with some potential strategies. Option 2 will be our funded partners supporting our outreach efforts in Fall 2025 to promote and share information about the redeveloped SHIP.

OHA staff will share strategies with the steering committee in August/September- the committee will be given an opportunity to share thoughts and insights related to strategies.

Tribal Engagement- Important topic and we will be working to ensure long term collaboration and communication. The SHIP team will continue to coordinate efforts through OHA's Public Health Division Tribal Liaison, Julia Krewson.

The final SHIP will be delivered in September.